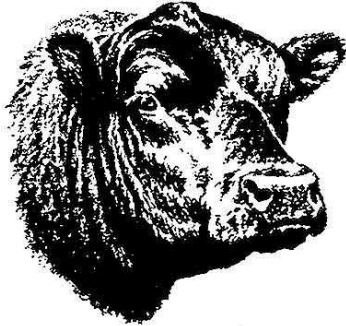


# West Virginia Young Sire Evaluation Program



## Wardensville Bull Test

**Kevin Shaffer, Ph.D., Program Coordinator**

West Virginia University Extension Service  
1194 Evansdale Drive, Rm G213  
PO Box 6108  
Morgantown, WV 26505  
Phone: 304-293-2669  
Email: Kevin.Shaffer@mail.wvu.edu

**Mission:**

1. Provide an opportunity for cooperators to evaluate genetic merit
2. Provide commercial producers with a source of genetically superior bulls and the necessary data to accurately evaluate differences in genetic merit
3. Provide animals and data that can be used for educational programming

The Wardensville Bull Evaluation Center is located at the WVU Reymann Memorial Farm approximately two miles north of Wardensville, WV on SR 259.

A component of the West Virginia Young Sire Evaluation Program, the Wardensville Bull Test is sponsored by:

***WVU Cooperative Extension  
WVU Division of Animal and Nutritional Sciences  
West Virginia Department of Agriculture  
West Virginia Cattlemen's Association***

# Rules and Regulations

## Section I: Eligibility

### Consignors

1. Cooperators must be a member of the West Virginia Cattlemen's Association.
2. Cooperators must be Beef Quality Assurance (BQA) Certified.
3. Cooperators must be enrolled in their respective breed association performance records program (ie. AHIR, TPR, CHIP, SMILE, etc.).
4. Cooperators are strongly encouraged to participate in at least one of the following carcass and/or feedlot performance data collection methods:

#### Choose A or B

- A. Retained ownership of cattle through harvest via the West Virginia Feedlot and Product Information Program (WVFPIP) or a program of equal merit. To participate in the WVFPIP, participants must enroll at least five (5) head (any combination of sex); however, cooperators should consign a number of cattle equal to or greater than the number of bulls they annually enroll in the WBT.
- B. Collect yearling ultrasound data on at least 65% of heifer calf crop annually.

### Bulls

1. A maximum of 180 bulls including a maximum of 150 Angus and 20 Hereford bulls will be accepted for evaluation.
2. Bulls must be born on or after January 20, 2022 through March 23, 2022.
3. All breeds of bulls are eligible; however, bulls must be registered with the appropriate breed association by the delivery date and registration numbers provided to the program coordinator. Composite bulls are also eligible but you must notify the program coordinator of the composite makeup.
4. Bulls must have individual birth and weaning weight data collected and submitted to the appropriate breed association by the delivery date.
5. Cooperators must consign at least three (3) head per breed group, and they must be contemporaries. At least one third of the consignment (within each weaning contemporary group) must be sired by a reference sire. A reference sire is defined as a bull with an accuracy for Birth Weight EPD at the time of nomination of  $\geq 0.65$  for Angus and  $\geq 0.60$  all other breeds, respectively.
6. Bulls must have been weaned in a contemporary group of at least ten (10) head. If enrolling bulls from multiple contemporary groups, at least three (3) head must be enrolled from each contemporary group, and at least one third of each contemporary group must be sired by a reference sire (See Item 5 above.).  
**NOTE:** *A contemporary group is defined as calves of the same sex born within a specified age range (60 - 90 days depending upon breed) and treated alike until the data is collected.*
7. Sire parentage must be verified via DNA and documentation provided at delivery.

8. Bulls produced via embryo transfer (ET) are eligible but cooperators must enroll a minimum of three ET bulls. Embryo transfer consignments do not have to be flushmates but must have been weaned in a contemporary group of at least five (5) head (*See contemporary group definition above*).
9. Bulls raised with or by nurse cows are not eligible.
10. Bulls that are carriers of known genetic defects as identified and recognized by their respective breed association are not eligible (*See Appendix III*).
  - A. Potential carriers of genetic defects must have been tested free prior to delivery and a copy of the test report must accompany bulls to the test station.

## Section II: Health Requirements

1. All bulls, except those from West Virginia certified and/or accredited herds, must have a negative tuberculosis (TB) and brucellosis test within 30 days prior to delivery. Veterinary verification of negative TB and brucellosis status must be provided at the time of delivery.
2. Cooperator herds must comply with the vaccination requirements outlined in the West Virginia Quality Assurance Comprehensive Herd Health Program (*See Appendix I*). To maximize vaccine efficacy and calf health, cooperators must:
  - A. Provide all bulls with continuous access to a complete, well-balanced, loose mineral supplement beginning at least 60 days prior to weaning. A mineral supplement formulated for two (2) ounces consumption per head per day should contain these minimum concentrations:
 

- Zinc (Zn)	2500 ppm
- Copper (Cu)	1000 ppm
- Selenium (Se)	30 ppm
  - B. Keep vaccines out of direct sunlight and store vaccines and syringes in a cooler at all times.
  - C. Vaccinate during the cooler times of the day. Do not administer vaccines when the air temperature exceeds 86° F.
  - D. Avoid treating bulls for internal or external parasites within seven (7) days of delivery. Because bulls will be dewormed at delivery, administering parasite treatments during this time could increase transportation stress and the potential for cumulative drug toxicity.
  - E. Wean calves at least 50 days prior to delivery or no later than September 20, 2022.
3. Bulls with active pinkeye, ringworm, or warts at the time of delivery will not be accepted. The station manager and/or program coordinator reserve the right to reject any such bull.
4. Horned bulls must be dehorned and fully healed prior to delivery to the test station.
5. No bull under federal or state quarantine may enter the test station.
6. Non-resident consignors must present a valid Certificate of Veterinary Inspection (CVI) prior to unloading bulls.

### Section III: Procedures for Entrance

1. Complete **Cooperator Enrollment Form** and **Bull Nomination Form** and submit to the program coordinator along with applicable nomination fees by **October 1, 2022** (must be postmarked by October 1, 2022). Late nominations will not be accepted.
  - A. Cooperators will be notified of the number of bulls accepted as soon as possible after the nomination deadline.
  - B. Preference will be given to resident cooperators from the previous year; however, new or non-resident cooperators will be accepted if space is available.
  - C. New or non-resident acceptance will be first come first serve with priority determined by the postmark date on the nomination form.
2. Wean and precondition bulls at least 50 days prior to delivery.
  - A. Collect weaning weights according to your breed association performance record guidelines (average of 205 days of age) and submit the data immediately for processing.
  - B. Feed bulls concentrate feeds between 0.5% and 1.0% of their body weight during the preconditioning period.
  - C. Administer booster vaccinations.
  - D. Bob tails and trim sheaths.
3. Prepare the following paperwork for submission at the time of delivery. Please prepare paperwork in advance and proofread your work.

**All Breeds:**

- Original Registration Certificate (*Signed by owner for transfer purposes*)
- Certificate of Vaccination
- Sire Parentage Verification Report (*Consideration will be given for laboratory testing delays.*)
- Verification of negative Brucellosis and TB
- Certificate of Veterinary Inspection (CVI) (*Non-resident consignors only*)

**Angus:**

- Individual AHIR Data Report
- Individual Produce of Dam Report

**Hereford:**

- Yearling Worksheet (Form 3)
- Dam Production Report

- *See Appendix II for detailed instructions on how to obtain these reports. If enrolling a breed not shown above, contact program coordinator for instructions.*

**NOTE:** Any bull that does not have complete information at the time of delivery will not be accepted. There will be zero tolerance!

4. Bulls will be received between 8:30 AM and 2 P.M. on Wednesday November 6, 2022. In the case of inclement weather, bulls will be received during the same time period on Wednesday, November 16, 2022.
5. All bulls must remain on feed for the entire data collection period unless removed by management.
6. By participating in the Wardensville Bull Test, all cooperators agree to allow the program coordinator to submit yearling data (ie. yearling weight, hip height, and scrotal circumference) to breed association's for processing, to request updated EPDs and within herd yearling ratios for use in the sale catalog, and to allow the program coordinator and/or other WVU faculty to utilize collected data for research purposes.

## Section IV: Sale Requirements

1. All bulls must have EPDs for birth weight, weaning weight, and milk.
  - A. All Angus bulls, except those resulting from embryo transfer, must have accuracies greater than the pedigree estimate ( $> 0.07$ ) for birth and weaning weight EPDs.
2. To qualify for the Wardensville Bull Test Sale, bulls must meet or exceed the following minimum independent culling levels:
  - A. Breed groups with  $\geq 20$  head completing evaluation:
    - Adjusted scrotal circumference .....  $\geq 31.0$  cm
    - Average Daily Gain (ADG) ratio .....  $> 1.25$  SD below breed mean
    - Adjusted Off-Test Weight (OTW) ratio .....  $> 1.5$  SD below breed mean
    - Ribeye Area per hundred weight (REA/CWT) .....  $> 1.5$  SD below breed mean
    - Adjusted Intramuscular Fat .....  $> 1.5$  SD below breed mean
    - Residual Feed Intake (RFI) .....  $< 1.5$  SD above breed mean
    - USDA Muscle Score .....  $> 1.0$
  - B. Breed groups with  $< 20$  head completing evaluation:
    - Adjusted scrotal circumference .....  $\geq 31.0$  cm
    - Average Daily Gain (ADG) ratio .....  $\geq 88$
    - Adjusted Off-Test Weight (OTW) ratio .....  $\geq 90$
    - Ribeye Area per hundred weight (REA/CWT) .....  $\geq 1.00$  in<sup>2</sup>
    - Adjusted Intramuscular Fat .....  $\geq 2.50\%$
    - Residual Feed Intake (RFI) .....  $\leq 1.5$  SD above test mean
    - USDA Muscle Score .....  $> 1.0$

**NOTE:** Sale management reserves the right to make minor adjustments to eligibility requirements should conditions warrant.

3. All bulls must pass a comprehensive Breeding Soundness Exam (BSE). Bulls will be given two (2) opportunities to pass.
4. Bulls exhibiting problems with correctness of feet and legs or structural soundness will not be eligible for sale.
5. All bulls must have a negative Bovine Viral Diarrhea Persistent Infection (BVD-PI). Bulls testing positive for BVD-PI must leave the test station immediately regardless of destination unless to slaughter.
6. The test committee reserves the right to disqualify any bull because of health, disposition, lack of identification, or if in the committee's opinion, the bull appears to be misrepresented. As a cooperator, you agree to allow management to obtain DNA samples for testing/evaluation.
7. All bulls failing to qualify for the sale will be released from the test station following the completion of breeding soundness exams.
  - A. Non-sale bulls must be picked up before sale day. Cooperators should make prior arrangements with the station manager.
  - B. Cooperators are encouraged to send inferior bulls to slaughter.

**NOTE:** Should a cooperator wish to retain full possession of a sale eligible bull for within-herd use, they must notify the program coordinator by March 1, 2023. If the cooperator fails to notify the program coordinator by the deadline, their bull will be included in the sale catalog, be auctioned on sale day, and be charged the appropriate sale fees.

## Section V: Sale

1. The Wardensville Bull Test Sale will take place on March 23, 2023 at noon.
2. Sale order will be determined using an index consisting of traits measured during the test period. The sale manager and executive committee reserve the right to adjust sale order as necessary.
3. To protect cooperators, a floor price will be in place for the sale and will be determined during a cooperator meeting.
  - A. Cooperators must be present for their opinion to count.
  - B. Any bull offered for sale that fails to bring the minimum bid will be the responsibility of the cooperator as soon as the bull leaves the sale ring.
4. As a cooperator, you agree to guarantee the ability of your bulls to breed and settle cows if properly cared for.
5. Announcements at the sale will come from the auctioneer’s box only and will take precedence over any printed material.
6. Auctioneer: Gary Vance

## Section VI: Costs

1. Pre-sale test costs per bull are:

- Nomination Fee .....	\$50.00
- GrowSafe Date Fee .....	\$35.00
- Management Fee .....	\$100.00
- Facilities Maintenance Fee .....	\$20.00
- Processing and Yardage (approximate) .....	\$60.00
- Feed (approximate) .....	\$400.00
- Veterinary	
- Preventative Health (approximate) .....	\$35.00
- Treatment (approximate) .....	\$15.00
- Breeding Soundness Exam .....	\$30.00
- Yearling Ultrasound Data .....	\$20.00
- Promotional Fee (approximate) .....	\$85.00
Estimated Total	\$800.00

- A. Nomination fee is applied to test costs and is nonrefundable for bulls accepted.
- B. All program marketing costs (ie. advertising, sale catalogs, etc.) are divided equally across all bulls enrolled in the program as a Promotional Fee.
- C. If a bull dies or is removed from the program prior to completing the test, the cooperator will pay all costs accumulated up to the removal date.

**NOTE:** *In addition to the nomination fee, \$300 per bull is due upon delivery to the test station. Cooperators may be billed periodically to cover feed costs. No post-dated checks will be accepted. Please make checks payable to WVCA.*

2. Sale costs (WVCA and auctioneer fee) will be assessed as 1.5% X Sale Price to all bulls auctioned on sale day. Bulls that fail to bring the floor price will be charged 1.5% X Floor Price.

## Section VII: Liability

Bulls enrolled in the Wardensville Bull Test will receive appropriate management. Professional veterinary services will be utilized when deemed necessary by the station manager and/or program coordinator. The program sponsors assume no liability, legal or otherwise, for loss of bulls, property damage, personal injury, or accuracy of collected data and printed information.

## Section VIII: 2022-2023 Schedule

Eligible Birth Dates:	January 20 – March 23, 2022
Enrollment/Nomination Deadline:	October 1, 2022
Weaned:	No later than September 20, 2022
Booster Vaccination:	No later than September 20, 2022

### 80-day Performance Evaluation Period

Delivery:	November 9, 2022
Alternate Delivery:	November 16, 2022
On Test:	November 30 and December 1, 2022
First Intermediate Weight:	December 21, 2022 (Delouse)
Second Intermediate Weight:	January 18, 2023
Off Test:	February 16 and 17, 2023 (Hip Height and Scrotal)
Ultrasound:	Week of February 6, 2023
Alternate Ultrasound:	Week of February 13, 2023
BSE:	Week of February 20, 2023
Sale:	March 23, 2022 @ Noon

# Appendix I

## WV Beef Quality Assurance Comprehensive Herd Health Program

K. Shaffer, WVU Extension Specialist  
D. Matlick, WVU Extension Veterinarian

### Pre-breeding:

#### Cows/Heifers/Bulls – Post-calving but 30-60 days prior to breeding

1. IBR, PI3, BVD, BRSV – Modified live (Use Fetal Protection (FP) Products)
2. Lepto 5 and/or L. hardjo bovis—(*Vibrio Optional*)
3. 7-way Clostridial (Yearling Replacement Heifers)
4. Pinkeye (Optional)
5. Deworm yearling heifers—Cows/Bulls optional depending upon body condition

#### Calves

1. IBR, PI3, BVD, BRSV - Modified live (BVD optional in spring)
2. 7-way Clostridial
3. Pasteurella multocida and Mannheimia haemolytica (Optional)
4. Pinkeye (Optional)

### Pre-vaccination/Weaning:

#### Calves – Three to four weeks prior to weaning

1. IBR, PI3, BVD, BRSV - Modified live
2. Lepto 5 and/or L. hardjo bovis \*\*\*
3. 7-way Clostridial
4. Pasteurella (Pasteurella multocida and/or Mannheimia haemolytica)
5. Deworm (White wormers are working best)

#### Calves – Booster at Weaning

1. IBR, PI3, BVD, BRSV - Modified live
2. Lepto 5 and/or L. hardjo bovis \*\*\*
3. 7-way Clostridial
4. Deworm (White wormers are working best)
5. All other products used at pre-vaccination that label requires booster

\*\*\* *Vibrio* is optional for pregnancy protection; however, if using vaccines containing *Vibrio* and Lepto 5, they must be administered separately from Pasteurella vaccines to minimize the risk of endotoxemia.

\*\*\* All vaccinations (boosters) must have been administered at least 30 days prior to delivery.

### Preg-Check:

1. *Vibrio*, Lepto 5 and/or L. hardjo bovis (Optional)
2. Deworm thin cows and heifers

### Pre-Calving:

1. Rotavirus, Coronavirus, Clostridium perfringens Type C, K99 E. coli. (Optional)
2. De-lice w/ non-generic pour-on

If you have questions about what products meet these requirements, contact the program coordinator.



## Appendix II

### Angus:

#### Individual AHIR Data Report

1. Login to your AAA online account.
2. Under the **MY HERD** tab, click on **Animal Lists** then **Current Calf Inventory**.
3. Select the second option for narrowing your inventory search.
  - a. Set the **Birth Date Range** to **Begin: 01/20/2022** and **End: 03/23/2022**.
  - b. Click on the **Sex** drop down list to the right and select **Bull**.
  - c. Click **Search**.
4. Scroll down to find a bull you have enrolled and click on **AHIR Data** at the far right.
5. Click on **Printable Version** at the top left hand corner of the screen.
6. Print the PDF file.
7. Repeat steps 4-6 for each bull you are enrolling.

#### Individual Produce of Dam Report

1. Login to your AAA online account.
2. Under the **REPORTS** tab, click on **Dam Reports** then **Produce of Dam Report**.
3. Click **Search**.
4. Scroll down to find the dam of a bull you have enrolled and click on her **Tag#**.
5. Print the PDF file.
6. Repeat steps 4 and 5 for the dam of each bull you are enrolling.

### Hereford:

#### Yearling Worksheet (Form 3)

1. Login in to your AHA online myHERD account.
2. Click on the **Reports** tab to view the drop down menu, then double click on **Yearling Worksheet (Form 3)**.
3. Click on the file entitled **5465000\_FORM3\_2022Spring.pdf**. (The numbers at the beginning will be your breeder code. If you do not see a 2020 Spring file, click on the **Jobs** tab, then on **Analyze Calf Crop**, and submit a request for a **Weaning Report**. Allow 5-10 minutes for the report to generate and then repeat steps 2 and 3.)
4. Print the PDF file.

#### Dam Production Report

1. Login in to your AHA online myHERD account.
2. Click on the **Jobs** tab and then on **Dam Production Reports**. Select the **Year** as "2022" and **Season** as "Spring" and click **Submit Request**. Click on **Pending Transactions** at the top right and submit the transaction to generate the report.
3. Allow 5-10 minutes for the report to generate and then click on the **Reports** tab to view the drop down menu. Click on **Dam Production Reports**.
4. Double click on **5465000\_DAM\_SMRY\_2022Spring.pdf**.
5. Print the PDF file.

## Appendix II

### Charolais:

#### Individual Weaning Data

1. Login to your AICA online account.
2. Hover over the heading **My Performance**.
3. Scroll down and click on **My Weaning**.
4. For each bull enrolled, click on [View](#) in the right hand column.
5. Click on the [Performance](#) tab and print the page.

#### Individual Dam Summary

1. Login to your AICA online account.
2. Hover over the heading **My Reports**.
3. Hover over the heading **Sire\Dam Performance Summary**.
4. Click on **Dam Lifetime – Individual**.
5. Enter the Dam ID for a bull you are entering and click **Print**.
6. Print the PDF file.
7. Repeat steps 5 and 6 for each bull enrolled.

### Simmental/SimAngus:

- Weaning Report
- Individual Dam Report

## Appendix III

Known carriers of the following genetic defects are not eligible. Potential carriers of genetic defects identified by their breed associations must be tested free and verification provided at delivery.

### **American Angus Association:**

Arthrogryposis Multiplex (AM)  
Neuropathic Hydrocephalus (NH)  
Contractual Arachnodactyly (CA)  
Developmental Duplication (DD)  
Myostatin (M1)  
Dwarfism (D2)  
Osteopetrosis (OS)  
Oculocutaneous Hypopigmentation (OH)

### **American Hereford Association:**

Hypotrichosis (HY)  
Dilutor (DL)  
Idiopathic Epilepsy (IE)  
Maple Syrup Urine Disease (MSUD)

### **American International Charolais Association:**

N/A

### **American Simmental Association:**

Arthrogryposis Multiplex (AM)  
Neuropathic Hydrocephalus (NH)  
Contractual Arachnodactyly (CA)  
Osteopetrosis (OS)  
Pulmonary Hypoplasia with Anasarca (PHA)  
Tibial Hemimelia (TH)  
Dwarfism (DW1)  
Idiopathic Epilepsy (IE)  
Hypotrichosis (HT)  
Bovine Mannosidosis (BM)  
Oculocutaneous Hypopigmentation (OH)

### **North American Limousin Foundation:**

Arthrogryposis Multiplex (AM)  
Neuropathic Hydrocephalus (NH)  
Contractual Arachnodactyly (CA)  
Osteopetrosis (OS)  
Pulmonary Hypoplasia with Anasarca (PHA)  
Tibial Hemimelia (TH)

# Cooperator Enrollment Form

## Wardensville Bull Test

Name: \_\_\_\_\_

Address: \_\_\_\_\_

Phone: \_\_\_\_\_ Email: \_\_\_\_\_

**NOTE:** *If you cannot answer YES to questions 1, 2, or 3, you may not be eligible to participate in the WBT.*

1. Are you BQA certified?  Yes  No
2. Are you a member of the West Virginia Cattlemen's Association?  Yes  No
3. Are you enrolled in your breed association performance records program?  Yes  No
4. Did you collect ultrasound data on your yearling heifers in 2022?  Yes  No

a. If YES, how many heifers did you ultrasound? \_\_\_\_\_

5. Did you participate in the WVFPIP or an equivalent program in 2020 or 2021?  Yes  No

a. If YES, how many cattle (both sexes) did you collect feedlot and carcass data on? \_\_\_\_\_

6. Please indicate below the breed(s) of bulls you are nominating, the number of bulls per breed, and the number of cows of that breed you calved in 2022. You must enroll at least three (3) bulls per breed.

Breed	Number of Bulls Nominated	Number of Cows Calved
1. _____	_____	_____
2. _____	_____	_____

7. I have enclosed payment for the nonrefundable nomination fee (\$50.00 per bull).  Yes  No

**NOTE:** *Payment is due in full at the time of enrollment. Please make checks payable to **WVCA**. Submit enrollment forms and payment to (must be postmarked by the enrollment deadline—October 1, 2022):*

Kevin Shaffer  
890 Tacy-Sunshine Ridge Rd  
Philippi, WV 26416

In nominating bulls for the Wardensville Bull Test, I verify that I have read and understand the rules and regulations for participating in the program and agree to abide by those rules, regulations, and methods. Furthermore, I understand that participation in the program is voluntary and that the sponsors of this program and their employees are not liable for the loss of any bull, property damage, or personal injury that might occur.

Signature of Cooperator: \_\_\_\_\_ Date: \_\_\_\_\_

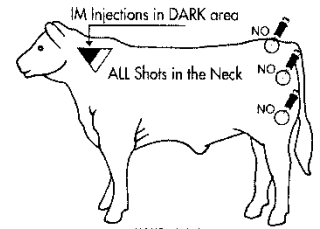




# Certificate of Vaccination

## Wardensville Bull Test

*This certificate must accompany bulls to the evaluation center.*



Herd Owner: \_\_\_\_\_

Address: \_\_\_\_\_

Phone: \_\_\_\_\_ Email: \_\_\_\_\_

**NOTE:** *The following required vaccinations must be administered under BQA guidelines as outlined in the WV Quality Assurance Comprehensive Herd Health Program.*

Vaccination	Date Administered	Product Used	Lot or Serial #
IBR, BVD, PI3, BRSV, Lepto 5 (MLV only—Vibrio optional)	Pre-weaning:		
	Weaning:		
7/8-Way Clostridial	Pre-weaning:		
	Weaning:		
Pasteurella	Pre-weaning:		
	Weaning:		
Parasite Control (Internal and External)	Pre-Weaning:		

In accordance with the WV Quality Assurance Comprehensive Herd Health Program and program rules, I have...

- |  |                              |                             |
|--|------------------------------|-----------------------------|
| A) administered the appropriate annual vaccinations to cows prior to breeding. | <input type="checkbox"/> Yes | <input type="checkbox"/> No |
| B) administered the appropriate spring vaccinations to calves.                 | <input type="checkbox"/> Yes | <input type="checkbox"/> No |

*Many herd health programs are compromised by mishandling of vaccines. To maximize vaccine efficacy, do the following:*

- *Avoid exposing vaccines to sunlight.*
- *Do not use the same syringe for different vaccines.*
- *Do not use alcohol to clean needles/syringes.*
- *Avoid hot days—Do not vaccinate when air temperature exceeds 86° F.*

I hereby certify that all bulls enrolled under my ownership have been administered the required vaccinations according to BQA guidelines on the date(s) indicated above.

Signature of Owner: \_\_\_\_\_ Date: \_\_\_\_\_

## **WBT Enrollment Checklist**

### **Due by October 1, 2022**

- Cooperator Enrollment Form
- Bull Nomination Form
- Nomination Fee (\$50/bull)

Submit to: Kevin Shaffer  
890 Tacy-Sunshine Ridge Rd  
Philippi, WV 26416

**NOTE:** *Eligible cooperators will be notified of the number of bulls accepted as soon as possible after the nomination deadline. You must fill out forms completely to be eligible. The \$50/bull nomination fee is nonrefundable for all bulls accepted. Please make checks payable to **WVCA**.*

### **Due at Delivery**

- Original Registration Certificate(Signed for Transfer)
- Certificate of Vaccination
- Negative Brucellosis Verification or Herd Certification
- Negative TB Verification or Herd Accreditation
- Individual Performance Record (See Rules and Regulations—Appendix II)
- Dams Performance Record (See Rules and Regulations—Appendix II)
- Negative Genetic Defect Report (Potential carriers only)
- Sire Parentage Verification Report
- Certification of Veterinary Inspection (Non-resident consignors only)
- \$300 per bull